

# SPRING REWIND REELS

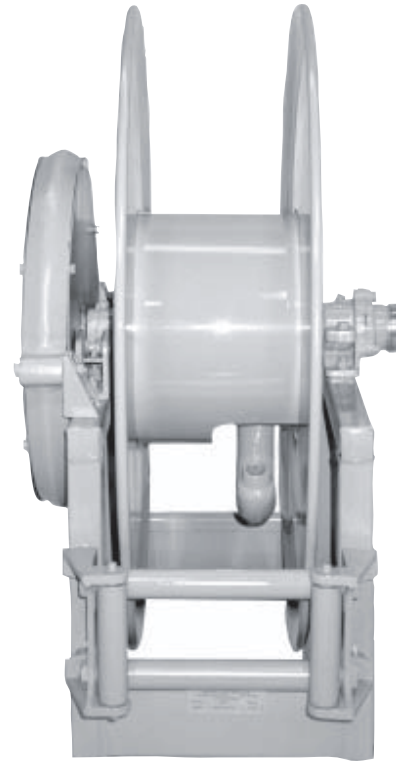
## SERIES 4800

1/2", 3/4", 1" or 1 1/2" Fluid Path For  
1/2" through 1 1/2" I.D. Hose

**Series 4830** reels handle hose from 1/2" through 1" I.D. Inlet is 1/2" up to 1" female/male NPT 90° swivel joint. Gooseneck is 1/2" up to 1" female/male NPT.

**Series 4800** reels handle hose from 1" through 1 1/2" I.D. 2" straight victaulic is standard. 1 1/2" male or female NPT straight swivel joint may be specified at no extra cost. 2" victaulic 90° available at extra cost. Gooseneck is 1" to 1 1/2" female/male NPT.

**NOTE:** Other sizes and/or threads can be furnished for gooseneck when specified.



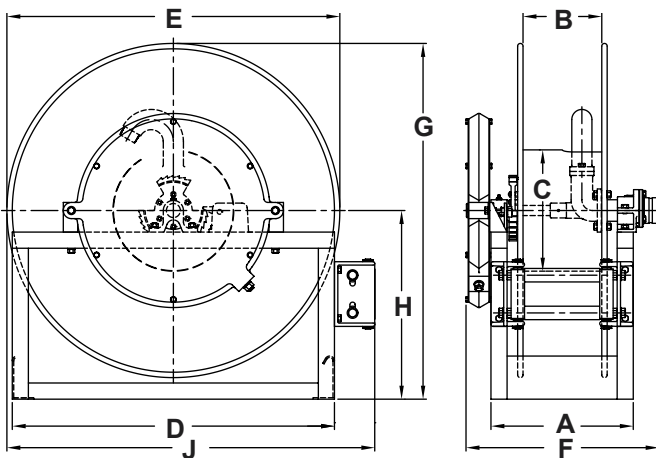
**Series 4830** Product temperatures from -20° to +225°F. and standard pressures to 1000 p.s.i. **Series 4800** product temperatures from -80° to +450°F at standard pressures to 300 p.s.i.

Reels to operate at other temperatures or pressures can be furnished at extra cost. Consult factory.

**ROLLER POSITION:** You must specify roller position BW, VW or TW. If roller position is not specified, reels will be shipped with rollers in POSITION BW. (SEE PAGE 7 FOR DETAILED INFORMATION.)

**HOSE STOP:** A hose stop should be used to prevent damage to rollers and nozzles and to permit adjustment of free hose length. See description on page 30. Hose stops are available at extra cost.

*The standard color for these series is grey.*



D	I	Reel Dimensions in Inches and <i>Millimeters</i>						MODEL NO.	Reel Dimensions in Inches and <i>Millimeters</i>						Approx Net Weight		
		in	1/2	3/4	1	1 1/4	1 1/2		A	B	C	D	E	F		G	H
Hose Capacity of Reel in Feet and Meters	in	7/8	1 9/32	1 9/16	1 13/16	2 1/16	4830-31-5X	10 1/2	5 1/2	15	30	31	17	33	17 1/2	34 1/2	122 LB
		mm	22	33	40	46		52	267	140	381	762	787	432	838	432	876
	ft	80	80	90			4830-31-8	13	8	15	30	31	19 1/2	33	17 1/2	34 1/2	125 LB
		m	24	24	27				330	203	381	762	787	495	838	432	876
	ft	*90	*100	100			4830-31-10	15	10	*15	30	31	21 1/2	33	17 1/2	34 1/2	128 LB
		m	*27	*30	30				381	254	*381	762	787	546	838	432	876
	ft			70	50	40	4800-31-6	11 1/4	6	11 1/4	30	31	17	33	17 1/2	34 1/2	122 LB
		m			21	15		12	286	152	286	762	787	432	838	432	876
	ft			75	75	50	4800-31-8	13 1/4	8	11 1/4	30	31	19	33	17 1/2	34 1/2	125 LB
		m			23	23		15	337	203	286	762	787	483	838	432	876

\* 20" (508mm) dia drum on Model# 4830-31-10 for 1/2" and 3/4" hose